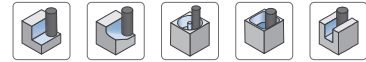
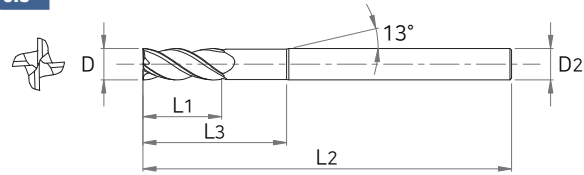


SE504

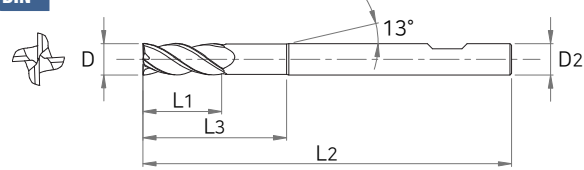
4 FLUTES SQUARE ENDMILL



JIS



DIN



■ Tolerance

D		Shank Dia
D1 ~ 5.5	0 ~ -0.015	h5
D6 ~ 7	0 ~ -0.02	
D8 ~ 20	0 ~ -0.03	



EDP No		SIZES (mm)				
JIS	DIN	D	L1	L3	L2	D2
SE504 010	SE504 010F	1	2.5	7.5	50	6
SE504 012	SE504 012F	1.2	3	8	50	6
SE504 015	SE504 015F	1.5	4	9	50	6
SE504 020	SE504 020F	2	6	11	50	6
SE504 025	SE504 025F	2.5	7	12	50	6
SE504 030	SE504 030F	3	8	13	55	6
SE504 03010	SE504 03010F	3	10	15	60	6
SE504 035	SE504 035F	3.5	10	15	55	6
SE504 040	SE504 040F	4	10	15	55	6
SE504 04012	SE504 04012F	4	12	17	60	6
SE504 045	SE504 045F	4.5	12	17	55	6
SE504 050	SE504 050F	5	15	20	55	6
SE504 055	SE504 055F	5.5	15	20	60	6
SE504 060	SE504 060F	6	15	22	60	6
SE504 06020	SE504 06020F	6	20	27	65	6
SE504 065	SE504 065F	6.5	15	22	60	8
SE504 070	SE504 070F	7	20	27	80	8
SE504 080	SE504 080F	8	20	27	70	8
SE504 08025	SE504 08025F	8	25	32	70	8
SE504 08030	SE504 08030F	8	30	37	80	8
SE504 085	SE504 085F	8.5	20	27	70	10
SE504 090	SE504 090F	9	25	32	80	10
SE504 100	SE504 100F	10	25	33	75	10
SE504 10035	SE504 10035F	10	35	43	85	10

* The tools of DIN standard do not consider of holding inventory

■ Applicable Working Material

Carbon Steel ~HB225	Alloy Steel HB225~325	Prehardened Steel HRc30~50	Hardened Steel		Cast Iron ~FCD500	Aluminum	Stainless Steel	Ti-Alloy	Ni-Alloy
			SKD61 ~HRc55	SKD11 HRc55~					
○	○	○					◎	○	○

○ : GOOD ◎ : EXCELLENT

ENDMILL

ZAMUS
STAR

E-STAR

U-WING

ZAMUS
THUNDER

X-STAR

S-WING

ALU-WAVE

STANDARD

COPPER
MATE

GRA
MATE

SE504 | 4 FLUTES SQUARE ENDMILL

ENDMILL

ZAMUS
STAR

E-STAR

U-WING

ZAMUS
THUNDER

X-STAR

S-WING

ALU-WAVE

STANDARD

COPPER
MATE

GRA
MATE

EDP No		SIZES (mm)				
JIS	DIN	D	L1	L3	L2	D2
SE504 120	SE504 120F	12	30	40	80	12
SE504 12040	SE504 12040F	12	40	50	90	12
SE504 140	SE504 140F	14	35	45	90	16
SE504 160	SE504 160F	16	42	52	100	16
SE504 180	SE504 180F	18	45	-	100	16
SE504 200	SE504 200F	20	48	58	100	20

* The tools of DIN standard do not consider of holding inventory

■ Applicable Working Material

Carbon Steel ~HB225	Alloy Steel HB225~325	Prehardened Steel HRc30~50	Hardened Steel		Cast Iron ~FCD500	Aluminum	Stainless Steel	Ti-Alloy	Ni-Alloy
			SKD61 ~HRc55	SKD11 HRc55~					
○	○	○					◎	○	○

○ : GOOD ◎ : EXCELLENT