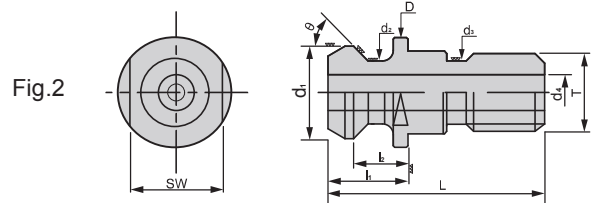
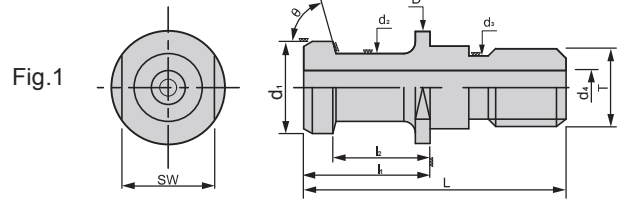


ISO 研磨螺栓拉頭 ISO HIGH STRENGTH PULL STUD

LEMMA



特點 Feature

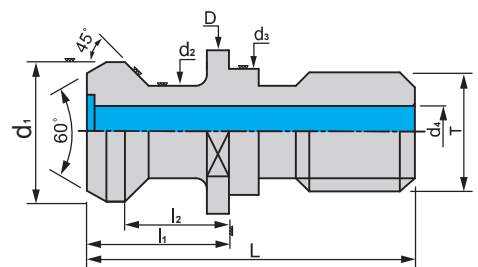
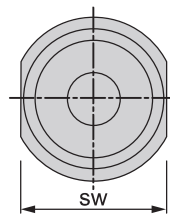
- 外徑研磨加工以兩頂心孔做研磨牙級的中心點，減少累計公差，減少偏擺

- Grinding the external thread by using the support of two live centers to reduce the accumulated tolerance and runout.

規格 Spec.	L	l ₁	l ₂	D	d ₁	d ₂	d ₃	d ₄	SW	T	Fig.	重量 (KGS) Weight
ISO40-A-G	54	26	20	23	19	14	17	7	19	M16x2.0P	1	0.07
ISO40-B-G	44.5	16.4	11.15	22.5	18.95	12.95	17	7.35	19	M16x2.0P	2	0.05
ISO50-A-G	74	34	25	36	28	21	25	11.5	30	M24x3.0P	1	0.20
ISO50-B-G	65.5	25.5	17.95	37	29.1	19.6	25	11.55	30	M24x3.0P	2	0.08

MAZAK 研磨螺栓拉頭 MAZAK HIGH STRENGTH PULL STUD

LEMMA



特點 Feature

- 外徑研磨加工以兩頂心孔做研磨牙級的中心點，減少累計公差，減少偏擺

- The outer diameter abrasive machining does by two intelligences grinds does a lot of talking the level central poin, reduces the accumulation common difference, reduction beats.

規格 Spec.	L	l ₁	l ₂	D	d ₁	d ₂	d ₃	d ₄	SW	T	重量 (KGS) Weight
MAZAK-BT40-G	44.1	19.1	14	22	18.8	12.45	17	7	19	M16x2.0P	0.05
MAZAK-BT50-G	65.2	25.2	17.58	37	28.95	20.83	25	10	30	M24x3.0P	0.19
MAZAK-CAT40-G	41.1	16.1	11	22	18.8	12.45	17	7	19	M16x2.0P	0.05

• 長度單位 Unit of Length (mm)