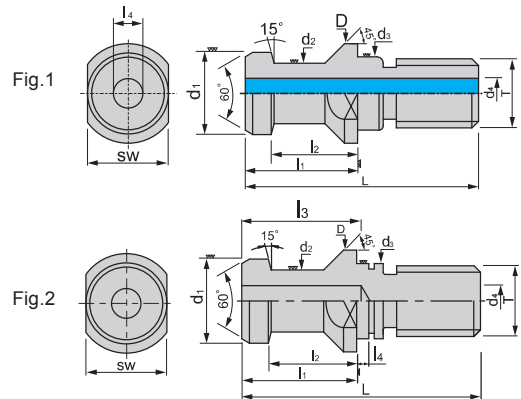


DAT 研磨螺栓拉頭

DAT HIGH STRENGTH PULL STUD

LEMMA



特點 Feature

- 外徑研磨加工以兩頂心孔做研磨牙級的中心點，減少累計公差，減少偏擺

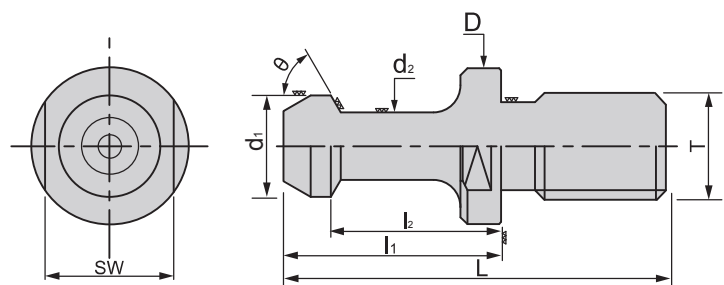
- Grinding the external thread by using the support of two live centers to reduce the accumulated tolerance and runout.

規格 Spec.	L	l ₁	l ₂	l ₃	l ₄	D	d ₁	d ₂	d ₃	d ₄	SW	T	Fig.	重量 (KGS) Weight
DAT30-A-G	44	24	19	-	-	17	13	9	13	-	14	M12x1.75P	1	0.04
DAT30-B-G	44	24	19	-	-	17	13	9	13	-	14	M12x1.75P	2	0.04
DAT40-A-G	54	26	20	-	-	23	19	14	17	7	19	M16x2.0P	1	0.07
DAT40-A-L-G	54	29	23	-	-	23	19	14	17	7	19	M16x2.0P	1	0.07
DAT40-B-G	54	26	20	27	3	23	19	14	17	7	19	M16x2.0P	2	0.08
DAT40-B-L-G	54	29	23	-	-	23	19	14	17	7	19	M16x2.0P	2	0.08

CAT 研磨螺栓拉頭

CAT HIGH STRENGTH PULL STUD

LEMMA



特點 Feature

- 外徑研磨加工以兩頂心孔做研磨牙級的中心點，減少累計公差，減少偏擺

- Grinding the external thread by using the support of two live centers to reduce the accumulated tolerance and runout.

規格 Spec.	L	l ₁	l ₂	D	d ₁	d ₂	SW	T	θ	重量 (KGS) Weight
CAT40-45°-G	57.15	32.15	25.15	23	15	10	19	5/8"W11	45°	0.07
CAT40-60°-G	57.15	32.15	25.15	23	15	10	19	5/8"W11	60°	0.07
CAT40-90°-G	57.15	32.15	25.15	23	15	10	19	5/8"W11	90°	0.07

• 長度單位 Unit of Length (mm)