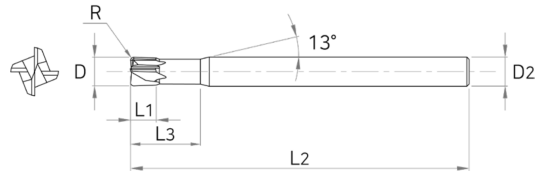
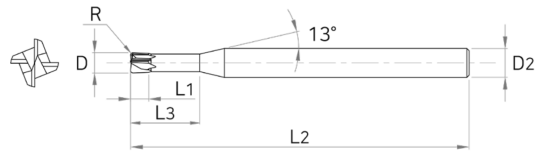


ZSPM4

4 FLUTES NECK RADIUS ENDMILL



ENDMILL

ZAMUS
STAR

E-STAR

U-WING

Tolerance

	D	Shank Dia
All Sizes	0 ~ -0.02	h5



ZAMUS
THUNDER

EDP No	SIZES (mm)					
	D	R	L1	L3	L2	D2
ZSPM4 030-05	3	0.5	1.2	8	50	6
ZSPM4 040-05	4	0.5	1.5	10	50	6
ZSPM4 060-05	6	0.5	2.5	12	60	6
ZSPM4 060-10	6	1	2.5	12	60	6
ZSPM4 060-15	6	1.5	2.5	12	60	6
ZSPM4 060-15L	6	1.5	2.5	12	90	6
ZSPM4 080-10	8	1	3.5	16	60	8
ZSPM4 080-20	8	2	3.5	16	60	8
ZSPM4 080-20L	8	2	3.5	16	100	8
ZSPM4 100-10	10	1	4	20	70	10
ZSPM4 100-20	10	2	4	20	70	10
ZSPM4 100-20L	10	2	4	20	100	10
ZSPM4 120-20	12	2	5	25	80	12
ZSPM4 120-30	12	3	5	25	80	12
ZSPM4 120-30L	12	3	5	25	110	12

ALU-WAVE

STANDARD

COPPER
MATE

GRA
MATE

Applicable Working Material

Carbon Steel ~HB225	Alloy Steel HB225~325	Prehardened Steel HRc30~50	Hardened Steel		Copper	Graphite	Cast Iron ~FCD500	Aluminum	Stainless Steel
			SKD61 ~HRc55	SKD11 HRc55~					
	○	○	◎	◎	○				

○ : GOOD ◎ : EXCELLENT